



# Santa Rosa Road No. 2 Debris Basin Decommissioning Project

# Project Location

- The project site comprises the existing flood control easement held by the Ventura County Watershed Protection District (District) along the Arroyo Santa Rosa Tributary, which empties into Arroyo Santa Rosa, approximately 2.1 stream miles downstream of the debris basin.
- Santa Rosa Road No. 2 Debris Basin is located east of Vista Arroyo Drive and north of Santa Rosa Road in the Santa Rosa Valley.
- The project site falls within unincorporated Ventura County, approximately 1.2 miles south of the City of Moorpark and 4.6 miles east of the City of Camarillo.



# Background

- The Santa Rosa Road No. 2 Debris Basin dam was constructed by the U.S. Soil Conservation Service in 1957 solely for debris collection (not storm water detention) and is currently maintained by the District.
- Development of the watershed (primarily rural residential) since 1957 has reduced the debris yield estimates for a 100-year storm event from approximately 12,500 cubic yards to 5,424 cubic yards (West Consultants 2016).
- The No. 2 Debris Basin has very limited functionality and does not meet current District standards.







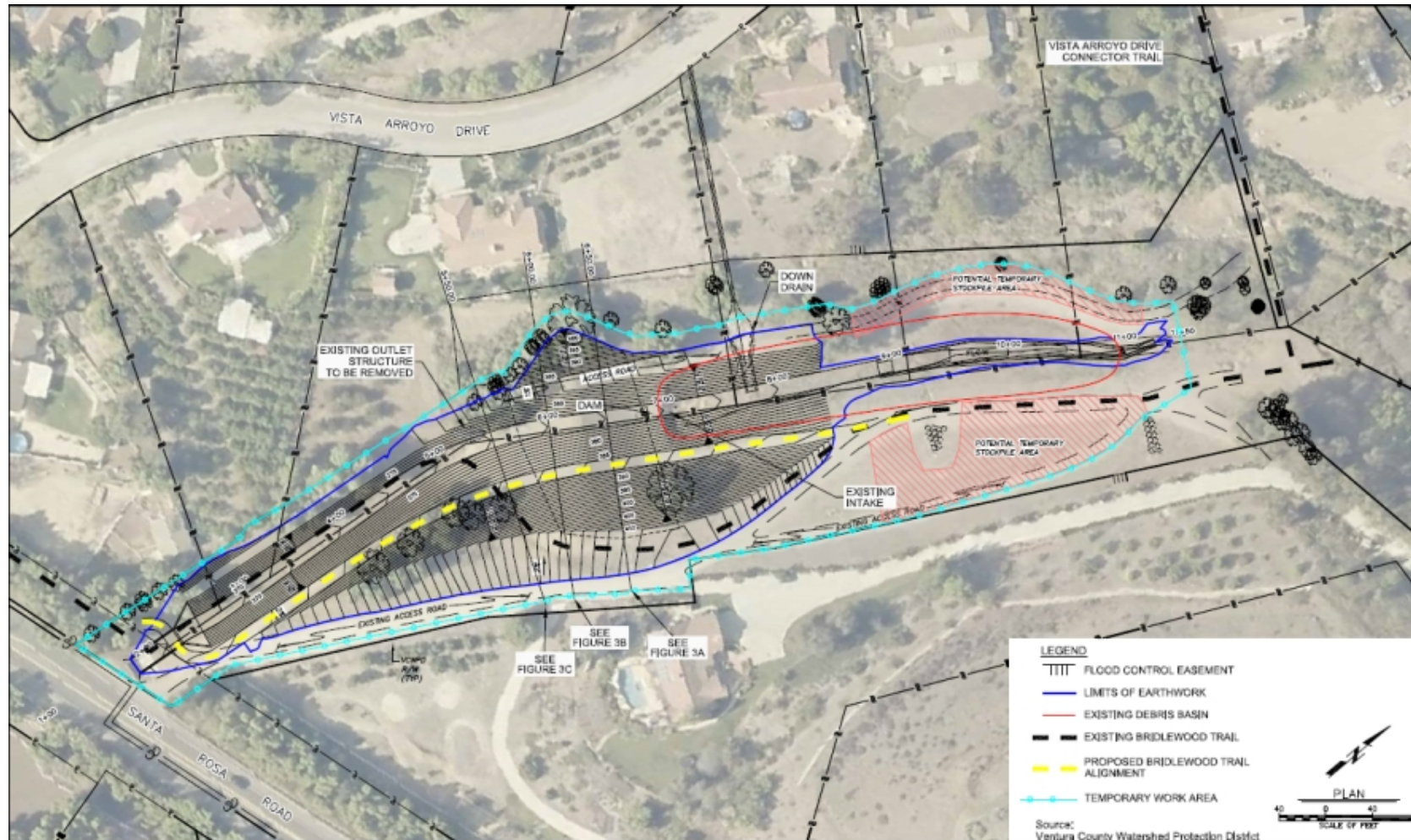


# Purpose and Need

- The purpose of the project is to decommission and remove the Santa Rosa Road No. 2 Debris Basin facility, minimize flood risk, and reduce future maintenance costs.
- The proposed project would meet this purpose and eliminate the potential flood risk associated with dam failure.



# Project Description - Overview





# Project Description - Components

- **Reinforced Concrete Box Culvert and Transition Structure**
  - The existing 14-foot-wide by 6-foot-high RC box culvert that crosses beneath Santa Rosa Road would be extended by 45 linear feet and the existing 20-foot-long RC transition structure would be reconstructed at the upstream end of the new box culvert.
- **Earthwork and Channel Construction**
  - Excavate approximately 7,700 cubic yards of earthen material to re-establish a 14-foot-wide, low-flow channel with banks. All earthen materials would be retained on site.
- **Facilities Decommissioning and Down Drain Reconstruction**
  - The removal and disposal of the existing facility components.
  - Repairing and extending existing erosion protection to the proposed low-flow channel.
- **Bridlewood Trail Realignment**
  - Realignment of the trail to cross over the extended RC box culvert to the proposed 10-foot-wide equestrian trail on the eastern side of the facility.
- **Erosion Control Plantings**
  - Planting to prevent erosion would consist of hydroseeding and planting container stock of native plants.
  - A temporary irrigation system would be installed for watering the erosion control plantings until their root systems are established (approximately 2 years).

# California Environmental Quality Act

- The District has prepared an Initial Study (IS) and Mitigated Negative Declaration (MND) pursuant to Sections 15070- 5075 of the State Guidelines for the Implementation of the California Environmental Quality Act and the County of Ventura Administrative Supplement to the State CEQA Guidelines.
- The IS identified and discussed potential impacts, mitigation measures and residual impacts for identified subject areas. The MND documented the District's finding that there are no significantly adverse unavoidable impacts associated with the proposed project, and the project does not require the preparation of an Environmental Impact Report (EIR).
- In compliance with Section 15073 of the State Guidelines, the IS/MND was circulated for public review from March 22 through April 22, 2019 (30 days).
- Due to the non-complex nature of this project, a separate environmental hearing was not held. However, public testimony will be accepted at the MND approval hearing [this hearing] before the Board of Supervisors.



# Community Outreach

The District conducted extensive community outreach for the proposed project. Outreach included:

- **Consultation with the Bridlewood Home Owners Association**
  - Attendance at HOA Meeting (November 11, 2017)
  - Question and Answer Session - On Site (November 13, 2017)
  - Question and Answer White Paper “*Questions Re Levy/Debris Catch Basin Removal Project from Bridlewood HOA*” (District undated).
  - Trail alignment coordination with HOA members, Director, and President prior to project design.
- **Consultation with Santa Rosa Valley Riders Association**
- **Coordination with the Office of Supervisor Linda Parks**
  - Santa Rosa Valley MAC Meetings (July 19, 2018 & June 20, 2019)
    - MAC Recommended to Approve the Project (June 20, 2019)
- **CEQA Noticing**
  - The CEQA Notice of Intent was sent to all residents within 2,000 feet of the project area

# Community Concerns

Primary concerns raised by the public include:

- **Purpose and Need**
  - District standards
  - Maintenance costs
  - Existing conditions, and likelihood of potential failure
  - Hydraulic modeling
- **HOA Responsibilities**
  - Maintenance of the bridle path
  - Flowage/Inundation Easement
  - Damage due to flooding

These concerns were addressed in the project's IS/MND, and further clarified in the Final MND



# District Request

- Approve the Final IS/MND
- Authorize District Director to Sign and File the Notice of Determination
- Authorize the District to Carry Out Project



# Questions?

---